

WEEKLY ACTIVITIES

Sunday	Worship Service at 10:00 a.m. with Nursery & Sunday School Coffee Hour and UCW Pie Sale!
Monday	Alanon at 7:30 p.m.
Tuesday	Council Meeting at 7:00 p.m.
Wednesday	Choir Rehearsal at 7:15 p.m.
Friday	Bereavement Circle at 2:00 p.m.
Saturday	Choir Rehearsal at 10:00 a.m.

Small Group Studies throughout the week!

FOR THE CHILDREN...We welcome children of all ages to worship with us. We offer Sunday School for children and youth, from age 2 ½ through Grade 6, following Children's Time in the worship service.

NURSERY ROOM...We are excited to announce that we now have youth volunteers (and the occasional adult) taking care of the toddlers in the nursery room so their parents can remain in the service. The youth will meet the toddlers in the nursery room after the children's time.



THIS MORNING WE WELCOME...into the fellowship of the Christian church and Central United by Infant Baptism:

AIDEN ANDREW WYLIE LYNDE,
son of Andrew & Alison Lynde

THE FLOWERS IN THE CHURCH TODAY...

have been placed by the Wetmore family in celebration of the Sacrament of Baptism.



BAPTISM PHOTOGRAPHS...To retain the sanctity of this Sacrament we are asking those who may wish to photograph the event to wait until after the service, at which time families are welcome to gather at the front of the church for photograph sessions.



CENTRAL'S ANNUAL TURKEY DINNER...will be held on SATURDAY, NOVEMBER 14TH this year and we encourage



everyone's participation in this major fundraiser for your church. Tickets are now available for this delicious homemade meal so be sure to buy yours and invite family and friends. Lots of

volunteers are needed so check out the sign up sheets today at Sally's bulletin board and select your job of choice!

SAMARITAN'S PURSE CHRISTMAS SHOEBOXES...

There is just one week to go in our Christmas Shoebox campaign and we are hoping to reach our goal of **175** filled boxes. For many children living in poverty in developing countries of the world, the shoebox may be the only gift they receive at Christmas. Please return your completed boxes to the outreach cupboard by next **Sunday, November 8th**. Thank you for everyone's help.



U.C.W. PIE SALE...will take place in the church kitchen following the worship service today. (And a correction to last week's notice – the price is now \$12, due to an increase in expenses.)



THE BEREAVEMENT CIRCLE... will meet again on FRIDAY, NOVEMBER 6TH at 2:00 p.m. in the Friendship Room. This grief support group is facilitated by Hayward Hann and is available to anyone who would like to attend.



ANNUAL FALL CHURCH YARD CLEAN UP... will be done on SATURDAY, NOVEMBER 7TH beginning at 8:30 a.m. Volunteers with rakes and shovels are welcome to join us. Coffee will be provided! Many hands make light work!

COMMUNION SERVERS NEEDED... to assist with the Sacrament of Communion to be held next SUNDAY, NOVEMBER 8TH. Sign up today at Sally's bulletin board. Thank you.



A CELEBRATION IN MEMORY OF DON BELL... will be held at Knox United Church (2569 Midland Avenue, Scarborough) on SUNDAY, NOVEMBER 8TH at 3 p.m. All are welcome to attend and share in a musical tribute to Don who passed away unexpectedly this summer. Don had served as supply organist at Central for many years.



MARKHAM PRAYER BREAKFAST... is on FRIDAY, NOVEMBER 27TH this year at 7:00 a.m. at the Hilton Suites. The speaker is Cardinal Thomas Collins with special music by Jackie Richardson. Please see Valerie Clubine for tickets (\$35 each).



POPPIES ARE HERE... and can be found on the greeters' table in the narthex. A donation box is available to support the work of the Royal Canadian Legion.



POMPEII EXHIBIT... Almost 2000 years ago, a volcano in southern Italy - Mount Vesuvius - erupted with tremendous force and little warning. Within twenty-four hours, the nearby Roman city of Pompeii was buried under a rain of hot ash and falling debris, lying undiscovered for over 1600 years. On SATURDAY, NOVEMBER 28TH, join Rev. Dr. James and Valerie Clubine as we explore this widely acclaimed exhibit at the Royal Ontario Museum in Toronto. (Time to be determined) The cost is \$15.99 plus HST. This is a wonderful tour for those planning to go on the Highlights of Italy trip with Jim and Valerie in May, but everyone will find it of interest. If you would like to join us, please contact Valerie at vclubine@rogers.com, 647-403-4924 or speak to her at church. We look forward to a fun and informative day!



OUR ANNUAL COMFORT SERVICE... will be held on SUNDAY, DECEMBER 6TH at 7:00 p.m. and we are looking for some of our congregation to assist with various duties, including greeting, preparing and serving light refreshments and participating with Rev. Clubine in the worship service. This service is offered to those who have experienced loss of a loved one and is a good opportunity to reach out to our congregation and community at large. **Please sign up at Sally's bulletin board.**



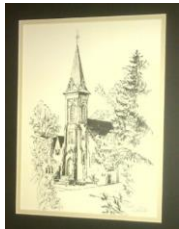
ITALY ANYONE?...Rev. Dr. James and Valerie Clubine will be leading a 16 day tour of Italy in May 2016 with travel provided by Rostad Tours. Further details can be found here: [Highlights of Italy](#) or from brochures found on the literature table in the narthex.



A FRIENDLY REMINDER...Please **do not park** in the church driveway – it is a fire route! Also, when parking on local streets, you will want to be aware of the parking signs and Highway Traffic Act regulations. (Parking Bylaw Officers are known to patrol our neighbourhood.)



CHURCH PRINTS AVAILABLE!...



Commemorate Central United Church's 175 Anniversary with a signed pen and ink print of our church. This beautiful print can be purchased, custom matted and framed, for \$90, or unframed for \$20. For further information, please speak to Valerie Clubine or Cheryl Neave.

UPDATE - INVEST IN YOUR FAITH CAMPAIGN...

Thanks again to those of you who have supported our campaign – we have raised approximately \$11,600 as of September 30th and hope the trend continues....as we would love to get to \$20,000. Also, we'd like to thank those who have increased/started giving via the PAR (pre-authorized remittance) program. The more participation we get the easier it is to budget our cash flow. Thanks again....and watch for further updates on our progress.



The Finance Committee

YOUR CHURCH FINANCES...A summary of our receipts and expenditures relating to the operations of the church are as follows as of the end of October:



	Year to Date <u>Actual</u>	Year to Date <u>Budget</u>	Year to Date <u>Last Year</u>
Receipts	\$214,955	\$223,985	\$211,812
Expenditures	\$234,238	\$239,510	\$227,613
(Deficit)	(\$ 19,283)	(\$ 15,525)	(\$ 15,801)

Thank you for your prayerful and continued support to the life and work of your church.

“PAR” (PRE-AUTHORIZED REMITTANCE)...

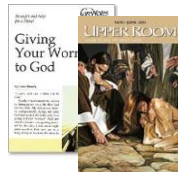
is available to help you contribute to your church on a regular basis. It also helps the church maintain a regular and dependable flow of contributions to support its ongoing commitments. If you are not already on PAR, please consider making your offering in this way. Enrollment forms are available from the literature table in the narthex. (Then simply return completed forms with a void cheque to Sally who will process on your behalf.)



HELP FILL OUR WATER JUG...Feel free to donate your loose change (including pennies!) to help purchase bedkits provided by Sleeping Children Around the World to needy children in developing countries. You can also donate via your offering envelope any time – just mark the “other” section “SCAW”. Check out the narthex for more information and pictures of children who have benefitted from our support.



UPPER ROOM & CARE NOTES... Check out the shelves in the narthex for a variety of Care Notes. Also, the current issue of the Upper Room is available from the literature table – help yourselves.



NAME TAGS... So that we may be a welcoming congregation we remind you to wear your name tag. For those of you who don't yet have one, just let Sally know and she will make one up for you for next Sunday. (Name tags can be found in the file boxes in the display cabinet in the narthex.)

GIVE TO THE FOOD BANK... We encourage you to donate non-perishable food items throughout the year. You may deliver food to any local fire hall, many grocery stores and to our donation basket here at the church.



CENTRAL'S PRAYER CHAIN... would like to support you, your friends and family in prayer. Please submit prayer requests to this group via Sally in the church office and/or to Rev. Karl Burden. All requests remain confidential amongst the church staff and prayer chain.



PASTORAL CARE... Should you become aware of any illness, bereavement, hospitalization, etc., among people of our church; please notify the minister and/or church office by email or phone (905-474-0183) as soon as possible so that we may respond with pastoral care, and, if desired, Sunday prayers.

